

WHERE PRECISION MEETS SPEED

SPEEDYLIGHT+

Fast light curing technology
for laterals & mainlines



DC SUPER FLEX

Powerful and extremely flexible cutter
for pipeline rehabilitation



**THE ULTIMATE
DUAL-MACHINE
SOLUTION**

Combining state-of-the-art light
curing with a versatile cutter, this
system offers fast, precise repairs
for both laterals and mainlines.



CURE HEADS
COMPATIBLE TO
WORK IN 2" UP TO 24"



SPEEDYLIGHT+

FAST LIGHT CURING TECHNOLOGY FOR LATERALS & MAINLINES

SpeedyLight+ works in 2" inconjunction with our XS up to 24" with different configurations of curing heads.

Compatible with felt liners and GRP UV liners.

SpeedyLight+ can also perform point repairs, showcasing its versatility with our family of LED packers.

Fast Laterals Curing

SpeedyLight+ can cure up to 4.92' per/min in a 6" line pipe with the XL cure head.

In Horizontal. In Vertical

SpeedyLight+ LED system is designed to be used in both horizontal and vertical pipes. Most laterals are horizontal, although building rehabilitation frequently involve vertical piping.

Green Technology

SpeedyLight+ LED protects our environment by using less power and less energy to cure.

90° Soft Bend or 2×45°

SpeedyLight+ LED successfully negotiates 90° soft bend or 2×45°. Its semi-rigid hose ensures a convenient push of the head along the pipe.

Mobile, Portable

All-in-one design allows the curing system to deploy virtually anywhere. Control unit, power supply and cable reel are integrated in a single, portable package.

Integrated Camera

Curing head with embedded camera delivering 150° field of view for a crisp image of the pipe.



LEDRIg

UV GLASS-FIBER CURING



LEDRIg family of curing devices are designed for portability and use with glass fiber reinforced polymer (GFRP) liners in the rehabilitation of sewer networks.

Hi-efficiency LED modules take the best from every Watt of energy, limiting unproductive heat and minimizing the size of the power supply unit required, while simplifying your ancillary equipment on site.

Works in pipes 6" all the way up to 24" *Only with GRP UV liners.

SPEEDYLIGHT VX

MAINLINES & LATERALS



The SpeedyLight VX LED curing system is designed for in-house and vertical no-dig rehabilitation applications. Working diameters start at 2" and the system is capable of curing liners up to 6". In conjunction with our XS kit.

SpeedyLight VX LED features a 125 ft hose on a very compact and portable frame.

Working diameters start at 2" and the system is capable of curing liners up to 6".

QUICKPATCH

EPOXY PATCH REPAIR



The Sewertronics' QuickPatch LED cures prepreps for a spot repair from 4-18". QuickPatch's high-power LED design incorporates a breakthrough, shadowless technology that guarantees full radiation reach to the entire surface of the Fiberglass prepreps. Each QuickPatch UV LED packer features an axial view camera for precise positioning and monitoring during curing.

QuickPatch LED cures prepreps for a spot repair from 4" up to 18".

XS KIT

SPEEDYLIGHT+ AND SPEEDYLIGHT VX



With our special XS curing head you can work in 2-3" by simply connecting the kit to the Speedylight+ or Speedylight VX. The XS kit is ready to reline pipes up to 50 ft long, ideal for indoors rehabilitations. The kit comes with its own motorized pulling unit, XS 100 Watts curing head, 50 ft long hose, and a protective case.

Additionally, you can do 90° bends starting at 2" with this kit.
*Maximum diameter is 3" for XS Kit.

CURING HEADS

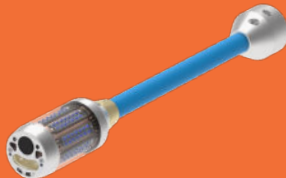
5 DIFFERENT HEADS FOR A WIDE RANGE OF DIAMETERS AND TYPE OF LINER

The family comprises 5 different heads, from an extra-small one up to a triple head, extending the range of application of the SpeedyLight+curing systems up to 24" in UV fibre-glass liners.

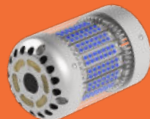
5 DIFFERENT
CURING HEADS



XS 2"- 3"



S 3"- 6"



M 4"- 8"



L 5"- 12"



XL 6"- 24"

MC DRUM 700

EFFICIENCY AND MOBILITY IN ONE DESIGN



The MC 700 Drum is crafted from lightweight aluminum and equipped with large wheels, it's easy to maneuver and transport across any terrain. A generously sized sight glass with internal lighting offers clear visibility, while the single-lever door mechanism allows for quick and secure opening and closing—eliminating the need for multiple bolt-downs. For added convenience, the entire frame or just the wheels can be detached effortlessly by pulling a tab.

Dimensions	24.8 × 37.4 × 32.3"
Weight	121 lbs
Max Liner Length	229 ft

*Maximum length based on 4" × 3 mm wet-out liner

MC DRUM 350

MOST COMPACT INVERSION DRUM



Our most compact inversion drum yet—built for performance, designed for portability. Compatible with ambient, steam, hot water, and UV curing methods. Constructed from durable, lightweight aluminum, weighing just under 27lbs, and equipped with a convenient carrying handle, this drum is made to move—easily navigating tight spaces. The fully adjustable drum angle gives you total control over your setup, and it's outfitted with a Camlock coupling for fast and easy nozzle changes.

Dimensions	17 × 22 × 20"
Weight	26.5 lbs
Max Liner Length	36 ft

*Maximum length based on 4" × 3 mm wet-out liner

CALIBRATION UNIT



A compact calibration roller designed to evenly distribute resin throughout a liner. Equipped with ergonomically positioned handles for enhanced portability. The roller height is adjustable using the handle, allowing precise control of spacing, with a built-in thickness indicator in millimeters for accurate calibration.

Dimensions	7.4 x 23 x 13.7"
Weight	36 lbs
Max Liner Length	16.9"

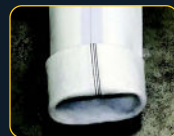
LINERS AND RESINS

High-Performance CIPP Lateral Lining Materials – Built for contractors who demand results. Upgrade your CIPP installations with top-tier lateral lining materials engineered for consistent performance, easy handling, and lasting durability. Whether you're relining residential laterals or tackling municipal rehab, our product line gives you the edge in quality and productivity.

WHY OUR LINING MATERIALS?

- Premium Felt & Fiberglass Liners – Flexible, strong, and calibrated for clean wet-outs and smooth inversion
- Resin Systems You Can Trust – UV-cure, Ambient-cure, and heat-cure options for every job condition
- Liners for Bends & Transitions – Simplify complex runs without compromise
- Fast Lead Times, Consistent Stock – Materials when and where you need them
- Pre-measured Kits or Bulk Orders – Scalable to suit your crew and workflow
- Technical Support & Training – Real-world expertise behind every shipment

From inversion liners to calibration hoses, resin systems to complete starter kits—we supply the materials that keep your crews moving and your jobs profitable.



POWERFUL
AND FLEXIBLE IN
45° AND 90° BENDS
IN 4" AND ABOVE



DC SUPER FLEX

SIZE RANGE: 3" – 6"

DANCUTTER'S EXTREMELY FLEXIBLE CUTTER

Powerful and Flexible

Extremely flexible in 45° and 90° bends in 4" and above. Effectively cuts, grinds, and mills in diverse materials.

Advanced Control Unit

Equipped with two joysticks, the control unit provides precise control over the motor rotation and cutter arm movements, allowing you to raise, lower, expand, and contract the cutter with ease.

360-degree Continuous Rotation

Enjoy unrestricted operation with a continuous 360-degree rotation feature.

High Manoeuvrability

Automatic feeder and built-in slip ring for seamless back-and-forth movement.

Supply Hose

164 ft hose for tailored operational flexibility.

Enhanced Functionality

The cutter is equipped with a spray nozzle for camera cleaning with air or fluid.

Standard Accessories:

Toolbox, centering tool with wheels, and transport box.

2 AIR MOTOR OPTIONS

GRABBER TOOL

SUPPLY HOSE: 164 FT

12" COLOR DISPLAY

INTEGRATED CAMERA

STAINLESS STEEL

DC MAXI FLEX

SIZE RANGE: 4" – 12"

DANCUTTER'S MOST POWERFUL CUTTER



It has an extremely powerful motor which makes the cutter both fast and efficient. The DC MAXI FLEX is flexible and can go through several 45° bends in a 6" pipe and works effortlessly whether the pipe is straight or has bends. If you are mostly working in larger pipes, DC MAXI FLEX is your right choice for reopening laterals or removing hard deposits like concrete.

360° CONTINUOUS ROTATION / FLEXIBLE 45° IN 6" PIPE

12" COLOR DISPLAY / INTEGRATED CAMERA

STAINLESS STEEL / SUPPLY HOSE: 230 FT

CUTS, GRINDS, AND MILLS IN ALL MATERIALS

USER FRIENDLY / PRECISE CONTROL

STANDARD ACCESSORIES: TOOLBOX, CENTRING TOOL
WITH WHEELS AND TRANSPORT BOX

DC MINI BIKE

SIZE RANGE: 2" – 3"

COMPACT, VERSATILE, AND POWERFUL CUTTER



The DC MINI BIKE is your go-to solution for precise and efficient cutting, grinding, and milling across a variety of materials including PVC, liner, concrete, cast iron, and steel. The DC MINI BIKE, Dancutter's most compact cutter, is specially designed to navigate through narrow pipes (2") and confined spaces. Its small size belies its robust performance, making it an ideal choice for challenging environments.

EXTREMELY FLEXIBLE IN 45° AND 90° BENDS

SMALL, LIGHTWEIGHT AND POWERFUL

CUTS, GRINDS AND MILLS IN ALL MATERIALS

STANDARD ACCESSORY: TOOLBOX

SUPPLY HOSE: 3 - 50 FT

USER FRIENDLY AND PRECISE CONTROL

FPV HEADSET

A FIRST-PERSON VIEW OF WHAT YOUR CUTTER
CAMERA SEES INSIDE THE PIPE



ULTRA IMMERSIVE FIELD
OF VIEW

EXCELLENT FOR BRIGHT
SUNLIGHT

INTEGRATED 32-CHANNEL
WIRELESS RECEIVER

800 × 480 TFT
RESOLUTION DISPLAY

CONTROL UNIT

DC SUPER FLEX AND DC MAXI FLEX



DURABLE CASING WITH
A 12" COLOR SCREEN
IN THE LID, DISPLAYING
A CLEAR IMAGE

ANTI-GLARE MONITOR
ENSURES CLARITY EVEN
IN BRIGHT CONDITIONS

RECORD AND SAVE
VIDEOS DIRECTLY TO A
USB STICK

GRABBER

A GREAT NO-DIG TOOL



The Dancutter Grabber is a great no-dig tool for removing obstacles inside a pipe.

The Grabber is air-driven and easy to mount on the DC SUPER FLEX instead of the air grinder.

PRECISE CONTROL

POWERFUL GRIPPING TEETH

GRABBING DIAMETER 2.7 "

360°-degree continuous rotation, high-quality stainless-steel alloy

CUTTING HEADS

CARBIDE AND DIAMOND



Advanced milling and cutting heads are designed for a range of materials including PVC, cement, concrete, cast iron, and steel. We supply diamond cutting heads and carbide cutting heads.

Pvc, liner, concrete, iron, cast iron, stainless steel

UPGRADE TO
THE GOLD TOOLBOX
FOR 6" ACCESSORIES

GOLD TOOLBOX

DC SUPER FLEX



INCLUDED IN THE GOLD TOOLBOX:

- A complete set of DC SUPER FLEX cutting heads for PVC, liner, and concrete.
- Extension cable, allowing you to operate the control unit from your van.
- Two extension sets for centering the cutter – one with wheels and one with brushes.
- A straight grinder as a backup motor, useful for opening laterals or cutting through pipes blocked with concrete.
- The Dancutter Grabber, easily mounted on the DC SUPER FLEX, perfect for retrieving objects stuck inside the pipe.

DC MAXI FLEX



INCLUDED IN THE GOLD TOOLBOX:

- A complete set of DC MAXI FLEX cutting heads for PVC, liner, and concrete.
- Extension cable, allowing you to operate the control unit from your van.
- Two additional grinders as backup motors – one angular and one straight grinder.

**BRIGHTEST
DAYLIGHT-READABLE
12" LCD SCREEN**



H12+ CONTROL MODULE

WORKS WITH ALL HATHORN STANDARD REELS

The Hathorn® H12+ is in a class of its own with the brightest daylight-readable 12" LCD screen in the industry. It has almost three times the brightness of the leading brand providing stunning picture quality, high contrast and 8X digital "pan & zoom" technology revealing details missed by other pipe inspection cameras.

Available with Wi-Fi as an option, the H12+ has menus in three languages (English, French and Spanish), compatibility with all Hathorn reels past, present and future from 100 - 600ft., unique on-screen job information bar and text overlay features, two sonde frequencies (512Hz & 640Hz) and industry-leading on-board file storage.

The H12+ comes standard with a 128Gb hard drive which is upgradeable to 512Gb allowing the user to save MPEG videos and JPEG screen shots to either the HDD or to a USB stick.

9.5LBS / 4.5KG

RECORD TO USB & HDD

INTERNAL HARD DRIVE

CAMERA LED LIGHT CONTROL

FULL SIZE KEYBOARD

INDUSTRY-LEADING WARRANTY

H7 SYSTEMS

200FT ALL-IN-ONE CAMERA SYSTEM



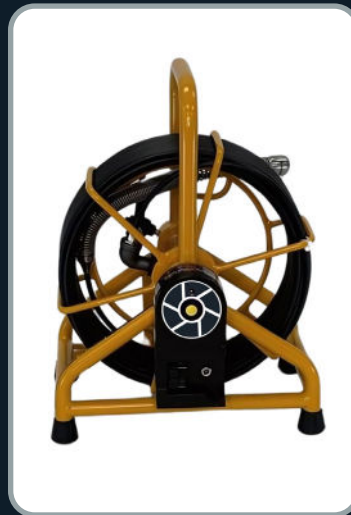
The H7 is a fully integrated inspection system with your choice of Hathorn camera heads and three different stiffnesses of push rod. All Hathorn® H7 systems come standard with a 7" daylight readable, shatter resistant LCD monitor, built-in footage counter, 512Hz sonde, and 200ft. of premium cable. Optional Wi-Fi connectivity is also available as an additional upgrade to the system. Weighing just 45 lbs., the H7 is both durable and highly portable. It's powered by 18V Milwaukee® (or equivalent) batteries, providing over 5 hours of runtime on a single charge.

200FT PREMIUM CABLE

AVAILABLE WITH 1", 1.23", and 1.43" CAMERA HEADS

MICRON WI-FI SYSTEMS

IDEAL CAMERA FOR SMALL JOBS



Designed for ultimate portability, the Micron Wi-Fi System is a compact, standalone camera unit weighing just 16 lbs. It easily navigates pipes from 1.5" to 3" in diameter. Using Hathorn's free app, it can live stream and record video on up to three devices simultaneously. Powered by an external 18V Milwaukee® (or equivalent) battery (sold separately), the system delivers over 12 hours of runtime.

100FT OF PREMIUM 1/4" ROD WITH HDPE JACKET

AVAILABLE WITH 7/8", or 1" STRAIGHT VIEW CAMERA HEADS

WE WILL BE HAPPY TO ANSWER ANY QUESTIONS YOU MAY HAVE

Minicam Headquarters:

12600 Newburgh Rd.
Livonia, MI 48150
info@minicaminc.com

California Service Center:

703 W Anaheim St.
Long Beach, CA 90813
california@minicaminc.com

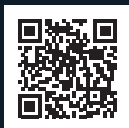
Florida Service Center:

2332 Old Combee Rd. Suite 107
Lakeland, FL 33805
florida@minicaminc.com

New England Service Center:

1 Industrial Way. Unit 2
Tyngsborough, MA 01879
newengland@minicaminc.com

SCAN ME TO
DISCOVER
MORE ONLINE



A Halma company



Minicam Trenchless | Phone (734) 452-7068 | sales@minicaminc.com | www.minicaminc.com