

hathorn

INSPECTION CAMERAS

High-performance tools
priced for plumbers and
contractors alike

Reliable service with
one of the largest dealer
repair networks in
North America



PRODUCT CATALOG | 2025

WHAT OUR CUSTOMERS HAVE TO SAY

I really can't say enough good things about Hathorn. The product is simply awesome. Compact, tough, easy to use, great all around quality. It works better than other cameras that cost twice as much.

• • • • •

Our company has twenty-five Hathorn® camera systems that get used every day. As a contracting firm we have come to count on the reliability and performance of these systems to get the job done every time.

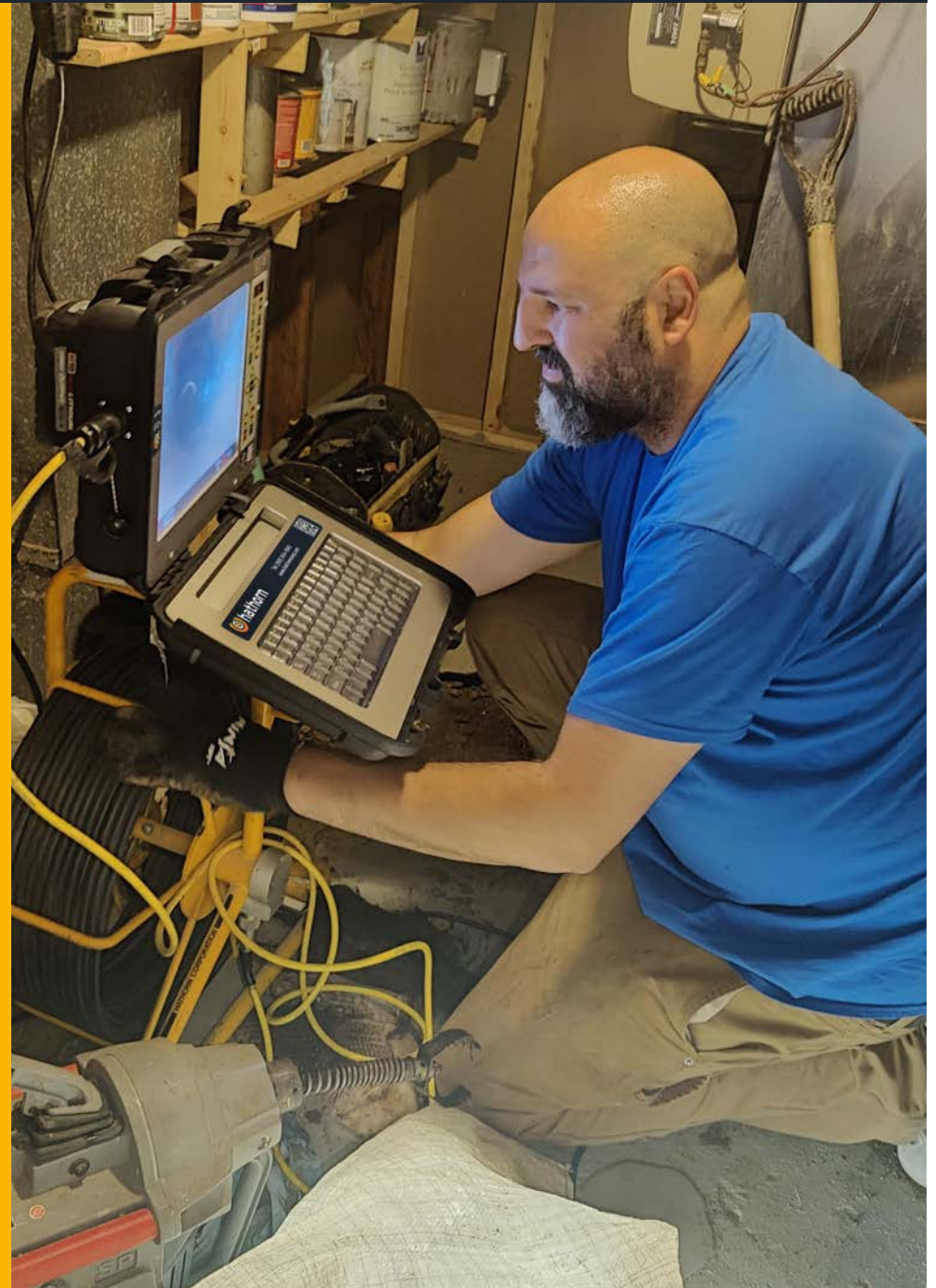
• • • • •

By far Hathorn cameras are the best investment we made as a business! Far outshines the other cameras we have used in our careers.

• • • • •

Being a full service septic company we have used a few other cameras and by far the Hathorn has been the best. The Wi-Fi reel allowed us to give the customer their own device to watch the inspection while we had our own at the same time giving the customer the best possible experience. Looking forward to our next reel to expand our business with Hathorn.

• • • • •



THE HATHORN WARRANTY

When you purchase a Hathorn inspection camera from us, or one of our authorized distributors, it comes with a 1-year warranty against manufacturer's defects. We stand behind everything we make and are dedicated to customer satisfaction, so if you have an issue with any Hathorn product we are here to help. Give us a call and we will try to help you by answering technical questions, connecting you with a service center or getting you the replacement parts you need.

We have service centers across the United States, Canada and Australia should you ever need to service your camera. You can access them by going to our website and locating the service center closest to you or by calling us at 1-866-HATHORN. Our factory-trained technicians will provide a quick, convenient solution for all your warranty and maintenance needs. Our commitment to you is that we have the parts you need in stock at all times. We recognize that downtime is painful and we will work to ensure you are back up and running as soon as possible.

Since 2003, Hathorn® has manufactured the toughest pipe and sewer inspection cameras on the market. From California to Canada; Alaska to Australia; Hathorn cameras can tackle any climate and any job.

Our business is building inspection cameras for your business. Call us to find out how we can help your business grow through unmatched reliability, parts availability and product customization.



CONTENTS



H12+ CONTROL MODULE	5 - 6
CAMERA REELS STANDARD	7 - 8
H7 CAMERA SYSTEM	9 - 10
H5 CAMERA SYSTEM	11 - 12
H2 CAMERA SYSTEM	13 - 14
WIFI REELS	15 - 16
CAMERA REELS MICRON	17 - 18
LOCATORS	19 - 20
PATCH CABLES	21
ACCESSORIES	22
CAMERA HEAD SKIDS	23 - 24
CAMERA HEADS	25
RETERM KITS	26
REPAIR CENTERS	27

H12+ CONTROL MODULE

HATHORN
H12+

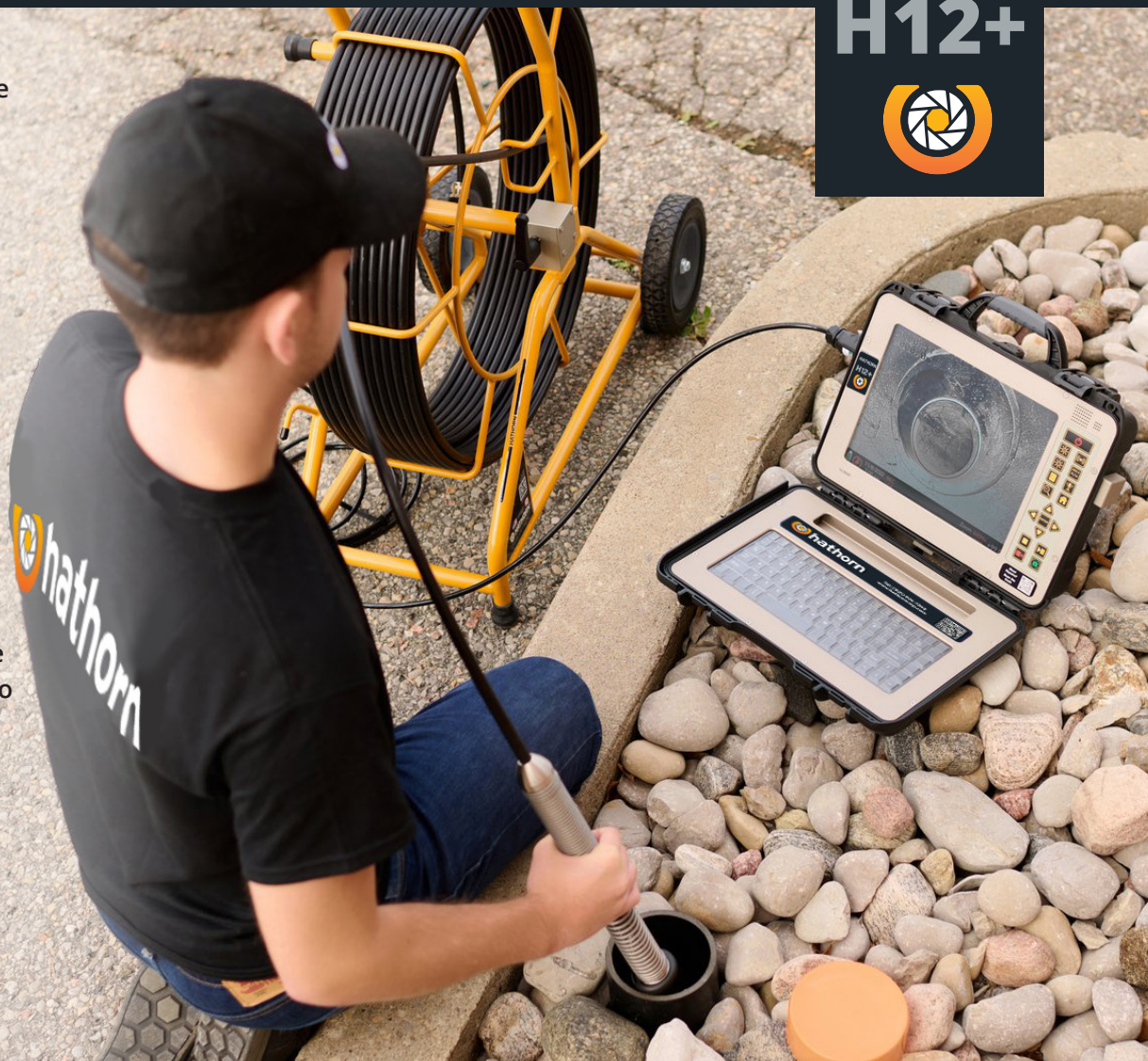


The Hathorn® H12+ is in a class of its own with the brightest daylight-readable 12" LCD screen in the industry. It has almost three times the brightness of the leading brand providing stunning picture quality, high contrast and 8X digital "pan & zoom" technology revealing details missed by other pipe inspection cameras.

Available with Wi-Fi as an option, the H12+ has menus in three languages (English, French and Spanish), compatibility with all Hathorn reels past, present and future from 100 - 600ft., unique on-screen job information bar and text overlay features, two sonde frequencies (512Hz & 640Hz) and industry-leading on-board file storage.

The H12+ comes standard with a 128Gb hard drive which is upgradeable to 512Gb allowing the user to save MPEG videos and JPEG screen shots to either the HDD or to a USB stick.

Powered by 18V Milwaukee® (or equivalent) batteries, the H12+ will run for over 4 hours on a single charge. Batteries sold separately



Light Weight
9.5 lbs/4.5 kg



Screen Shot Function



Internal Hard Drive
128Gb or 512Gb



Works with 18V
Milwaukee® or
Equivalent Batteries



Full Size Keyboard



Daylight Readable
Display



Record to USB & HDD



Hathorn Info Bar



Camera LED Light
Control



Industry-Leading
Warranty

H12+ SPECIFICATIONS

Display

Size & Display	12" (30.7cm) impact-resistant LCD
Resolution & Brightness	XGA 1024 x 768 pixels with 1,300 cd/m2
Zoom	1X, 2X, 4X, 8X with digital zoom feature

Recording, Storage & Features

Recording Options	MPEG4 video (H.264 at 30 fps) & JPEG screen-shot
Storage Options	USB, HDD or USB & HDD
USB Capacity	USB 2.0 up to 32Gb
Hard Drive Capacity	128Gb (standard) or 512Gb (upgrade)
Keyboard	Full-sized QWERTY with silicone cover
Camera Head LED	Dimming control 5% increments
Hathorn Info Bar	74 characters over 2 lines with time/date
Text Overlay	English, Spanish, French
Menu Languages	Integrated microphone and speaker
Footage Counter	Feet or meters with reset function
Sonde Frequencies	High power 512Hz or 640Hz
Reel Compatibility	All Hathorn reels (except Wi-Fi)

Power

Battery (not incl.)	Only Milwaukee® M18 18V or equivalent
Battery Life	-4Hrs. using 3.0Ah
Battery Extender	Auto dimming & auto saving
AC/DC Adapter	12V-4.1A (included)

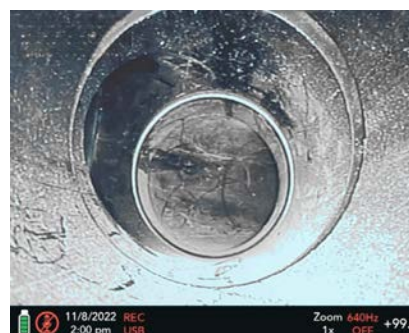
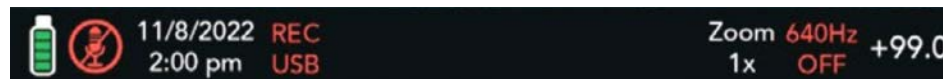
Weight & Dimensions

Weight without Battery	9.5lb (4.3Kg)
Dimensions (L x W x H)	-15" x 12" x 5.5" (38cm x 30cm x 14cm)



Environmental

Water Resistance	IP65
Operating Temperature	14°F to 122°F (-10°C to 50°C)
Storage Temperature	4°F to 140°F (-20°C to 60°C)



The Hathorn® Info Bar at the bottom of the screen allows you to see battery life, speaker function, time and date, recording file location, zoom, sonde frequency function and footage. The info bar is customizable - allowing you to put your company or client info at the bottom of the screen, recorded throughout the video. The newly designed, intuitive menus allow for a minimal learning curve. You are up and running in minutes.

CAMERA REELS STANDARD

Hathorn® camera reels are designed to work with any Hathorn control module, past present or future. These rugged and durable camera reels come fitted with your choice of Hathorn self-levelling camera heads, all equipped with super-bright, cool running LEDs for optimal picture quality.

Butt-welded steel frame construction, stainless steel camera heads and your choice of cable size allow you to push further than ever before and remain in the field longer with Hathorn's legendary reliability.

Hathorn camera reels are trusted by plumbers, municipalities, general contractors, home inspectors, petrochemical companies, and mining engineers to deliver a clear, recordable video inspection every time the camera is used. Our camera reels ship with a full one-year warranty.



For use with Hathorn
Command Modules



Self leveling Camera
Heads



200 ft to 600 ft of Push
Rod



512Hz or 640Hz High
Power Sonde



Industry-Leading
Warranty

CAMERA REELS SPECIFICATION

Display

Size & Display

Compatible with all Hathorn control modules. H12+ recommended for best picture and options

Features

Sonde Frequency

High power 512Hz or 640Hz (available only with H12+ controller)

Push Rod

HDPE push rod with fiberglass - multiple lengths and thicknesses

Weights & Dimensions

Weight

See specific item in list to the right

Dimensions (L x W x H)

See specific item in list to the right

Environmental

Water Resistance - Camera & Rod

Change to IP67 to 60psi

Water Resistance - Battery Cradle

Change to IP65

Water Resistance - Reel Hub

IP64

Operating Temperature

14°F to 122°F (-10°C to 50°C)

Storage Temperature

4°F to 140°F (-20°C to 60°C)



CH-1SV

1" Straight View stainless steel camera head



CH-123SL

1.23" Self-Leveling stainless steel camera head



CH-143SL

1.43" Self-Leveling stainless steel camera head



Extra Large

Catalog #	Camera Head	Self-Leveling	Rod Length	Rod Size	Minimum 90° Elbow	Weight	Maximum Pipe	Dimensions
XLR-5568-SL	1.68"	✓	500 ft.	5/8"	3"	90 lbs	12"	33" x 29" x16"

Large

Catalog #	Camera Head	Self-Leveling	Rod Length	Rod Size	Minimum 90° Elbow	Weight	Maximum Pipe	Dimensions
LR-4168-SL	1.68"	✓	400 ft.	1/2"	3"	65 lbs	12"	33" x 29" x16"
LR-2168-SL	1.68"	✓	200 ft.	1/2"	3"	45 lbs	12"	33" x 29" x16"
LR-4143-SL	1.43"	✓	400 ft.	1/2"	3"	65 lbs	10"	33" x 29" x16"
LR-3143-SL	1.43"	✓	300 ft.	1/2"	3"	55 lbs	10"	33" x 29" x16"
LR-2143-SL	1.43"	✓	200 ft.	1/2"	3"	45 lbs	10"	33" x 29" x16"

Mid

Catalog #	Camera Head	Self-Leveling	Rod Length	Rod Size	Minimum 90° Elbow	Weight	Maximum Pipe	Dimensions
MR-2168-SL	1.68"	✓	200 ft.	1/2"	3"	42 lbs	12"	29" x 18" x15"
MR-2143-SL	1.43"	✓	200 ft.	1/2"	3"	42 lbs	10"	29" x 18" x15"
MR-2123-SL	1.23"	✓	200 ft.	0.400"	2"	42 lbs	6"	29" x 18" x15"

Mini

Catalog #	Camera Head	Self-Leveling	Rod Length	Rod Size	Minimum 90° Elbow	Weight	Maximum Pipe	Dimensions
MN-2123-SL	1.23"	✓	200 ft.	3/8"	2"	33 lbs	6"	24" x 18" x10"
MN-2100	1"	X	200 ft.	3/8"	2"	33 lbs	4"	24" x 18" x10"

H7 CAMERA SYSTEM

HATHORN

H7



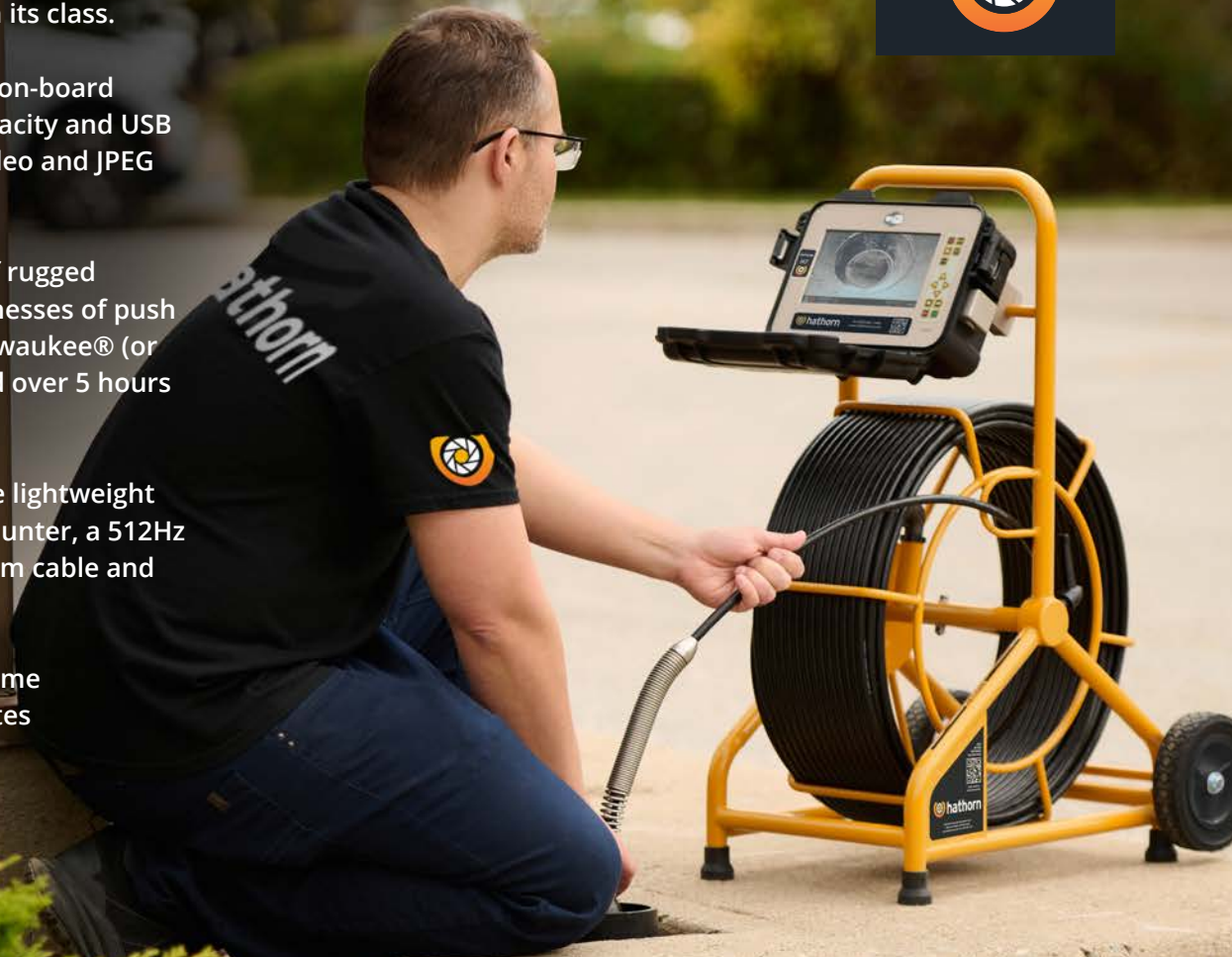
Hathorn® H7 systems come standard with a 7" daylight readable shatter resistant LCD monitor with 1,000 cd/m² of brightness, making it the brightest monitor in its class.

Available with Wi-Fi as an option, the H7 has an on-board hard drive with 64Gb (upgradable to 128Gb) capacity and USB recording allowing the user to record MPEG4 video and JPEG screen shots.

The H7 is a complete system with your choice of rugged Hathorn camera heads and three different stiffnesses of push rod. These systems are compatible with 18V Milwaukee® (or equivalent) batteries for ultimate portability and over 5 hours of runtime on a single charge.

Portability is never an issue with the H7 as these lightweight units are only 45lbs. All H7s feature a footage counter, a 512Hz sonde and come equipped with 200ft. of premium cable and your choice of camera head.

These rugged systems have butt-welded steel frame construction and feature military-grade faceplates and connectors.



Screen Shot Function



Daylight Readable Display



Internal Hard Drive
128Gb or 512Gb



Self-Leveling Camera Heads



Record to USB & HDD



512Hz or 640Hz
High Power Sonde



200 ft of Push Rod



Works with 18V
Milwaukee® or
Equivalent Batteries



Industry-Leading
Warranty

H7 SPECIFICATIONS

Display

Size & Display	7" (17.8cm) impact-resistant, daylight-readable LCD
Resolution & Brightness	1024 x 600 pixels with 1,000 cd/m2

Recording, Storage & Features

Recording Options	MPEG4 video (H.264 at 30 fps) & JPEG screen-shot
Storage Options	USB, HDD or USB & HDD
USB Capacity	USB 2.0 up to 32Gb
Hard Drive Capacity	64Gb (standard) or 128Gb (upgrade)
Menu Languages	English, Spanish, French
Footage Counter	Feet or meters - resettable
Sonde Frequencies	High power 512Hz or 640Hz
Push Rod	200 ft. of HDPE push rod with fiberglass core

Power

Battery (not incl.)	Only Milwaukee® M18 18V or equivalent
Battery Life	~5Hrs. using 3.0Ah
Battery Extender	Auto dimming & auto saving
AC/DC Adapter	12V - 4.1A (included)

Weight & Dimensions

Weight without Battery	45lb (20.4Kg)
Dimensions (L x W x H)	19" x 15.5" x 29.5" (48cm x 39cm x 75cm)

Environmental

Water Resistance	IP65
Operating Temperature	14°F to 122°F (-10°C to 50°C)
Storage Temperature	-4°F to 140°F (-20°C to 60°C)



Catalog #	Camera Head	Self-Leveling	Rod Length	Rod Size	Minimum 90° Elbow	Maximum Pipe Well Lit
H7-2168-SL	1.68"	✓	200 ft.	3"	3"	12"
H7-2143-SL	1.43"	✓	200 ft.	3"	3"	10"
H&-2143-SL	1.23"	✓	200 ft.	0.400"	2"	6"
H7-2100	1"	X	200 ft.	3/8"	1.5"	4"

*Straight View Cameras Available



CH-1SV
1" Straight View
stainless steel
camera head



CH-123SL
1.23" Self-Leveling
stainless steel
camera head



CH-143SL
1.43" Self-Leveling
stainless steel
camera head

H5 CAMERA SYSTEM

HATHORN

H5



The Hathorn® H5 has been specially designed for the rental industry with ruggedness and simplicity in mind. The H5 comes with a metal-guarded 5.5" daylight- readable shatter-resistant LCD monitor with 1,000 cd/m2 of brightness, making it the brightest monitor in the rental industry. It offers USB video recording with a screen shot feature allowing the user to record MPEG4 video and JPEGs to a portable USB drive.

The H5 is a complete system with your choice of rugged Hathorn camera heads and three different stiffnesses of push rod. These systems are compatible with 18V Milwaukee® (or equivalent) batteries for ultimate portability and over 5 hours of runtime on a single charge. Portability is never an issue with the H5 as these lightweight units are only 45lbs.

All H5s feature a footage counter and a 512Hz sonde. The H5 is manufactured with a butt-welded steel frame construction and features military-grade faceplates and connectors.

Hathorn products have been trusted by rental centers across the country for over a decade to deliver strong return on investment and unmatched durability.



Screen Shot Function



Daylight Readable Display



200 ft of Push Rod



Self-Leveling Camera Heads



512hz or 640hz High Power Sonde



Works with 18V Milwaukee® or Equivalent Batteries



Industry-Leading Warranty



Record to USB & HDD

DESIGNED
SPECIALLY
FOR THE
TOOL RENTAL
INDUSTRY

H5 SPECIFICATIONS

Display

Size & Display 5.5" (14cm) impact-resistant, daylight readable LCD

Resolution & Brightness 1024 x 600 pixels with 1,000 cd/m2

Recording, Storage & Features

Recording Options MPEG4 video (H.264 at 30 fps) & JPEG screen-shot

Storage Options USB

USB Capacity USB 2.0 up to 32Gb

Hard Drive Capacity 64Gb (standard) or 128Gb (upgrade)

Menu Languages English, Spanish, French

Footage Counter Feet or meters - resettable

Sonde Frequencies 512hz or 640hz High Power Sonde

Push Rod 200 ft. of HDPE push rod with fiberglass core

Power

Battery (not incl.) Only Milwaukee® M18 18V or equivalent

Battery Life ~5Hrs. using 3.0Ah

Battery Extender Auto dimming & auto saving

AC/DC Adapter 12V - 4.1A (included)

Weight & Dimensions

Weight without Battery 45lb (20.4Kg)

Dimensions (L x W x H) 19" x 15.5" x 29.5" (48cm x 39cm x 75cm)

Environmental

Water Resistance IP65

Operating Temperature 14°F to 122°F (-10°C to 50°C)

Storage Temperature -4°F to 140°F (-20°C to 60°C)



Catalog #	Camera Head	Self-Leveling	Rod Length	Rod Size	Minimum 90° Elbow	Maximum Pipe Well Lit
H7-2168-SL	1.68"	✓	200 ft.	3"	3"	12"
H7-2143-SL	1.43"	✓	200 ft.	3"	3"	10"
H&-2143-SL	1.23"	✓	200 ft.	0.400"	2"	6"
H7-2100	1"	X	200 ft.	3/8"	1.5"	4"



CH-1SV
1" Straight View
stainless steel
camera head



CH-123SL
1.23" Self-Leveling
stainless steel
camera head



CH-143SL
1.43" Self-Leveling
stainless steel
camera head

H2 CAMERA SYSTEM

HATHORN

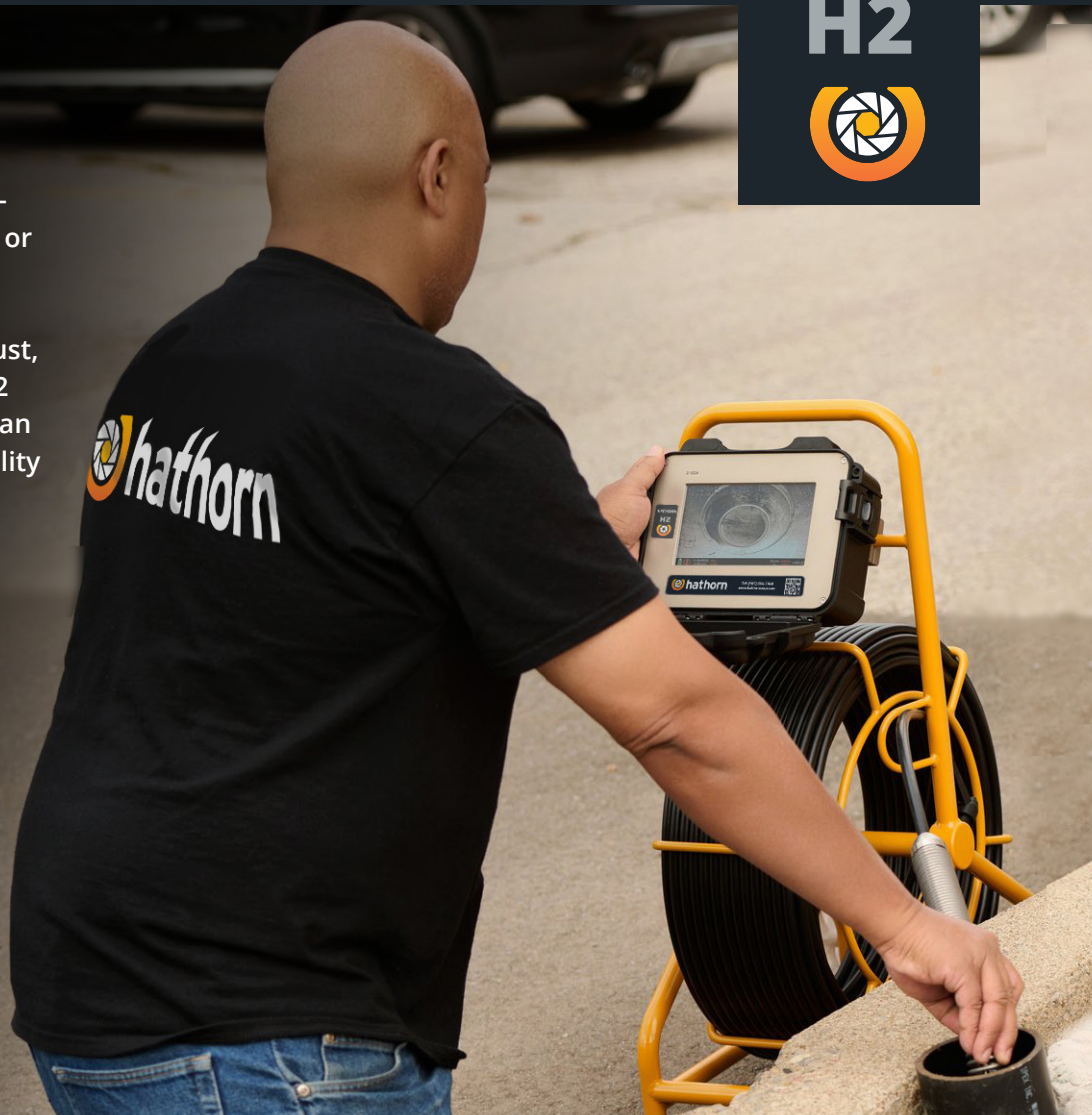
H2



The Hathorn® H2 comes with a 7" shatter-resistant LCD monitor, 200 ft. of premium push rod and your choice of straight-view or self-leveling camera heads, all with cool running, super-bright LED lights. The H2 also includes an on-screen footage counter in feet and meters, as well as 512Hz or 640Hz High Power Sonde.

Being aimed at the budget conscious user who wants a robust, easy-to-use system, without paying for extra options, the H2 camera system does not have a recording option. The H2 is an entry level inspection camera offering the same rugged quality and portability of our more expensive models. All Hathorn products are compatible with 18V Milwaukee® batteries offering the H2 over 6 hours of runtime on a single charge.

Trusted by plumbers and contractors to deliver rugged dependability, portability and a full one-year warranty.



Self-Leveling Camera Heads



Works with 18V Milwaukee® or Equivalent Batteries



200 ft of Push Rod



512hz or 640hz High Power Sonde



Industry-Leading Warranty

H2 SPECIFICATIONS

Display

Size & Type	7" (17.8cm) impact-resistant LCD
Resolution & Brightness	1024 x 600 pixels with 1,000 cd/m2

Recording, Storage & Features

Footage Counter	Feet or meters - resettable
Sonde Frequencies	512hz or 640hz High Power Sonde
Push Rod	200 ft. of HDPE push rod with fiberglass core

Power

Battery (not incl.)	Only Milwaukee® M18 18V or equivalent
Battery Life	~6Hrs. using 3.0Ah
Battery Extender	Auto dimming & auto saving
AC/DC Adapter	12V - 4.1A (included)

Weight & Dimensions

Weight without Battery	45lb (20.4Kg)
Dimensions (L x W x H)	19" x 15.5" x 29.5" (48cm x 39cm x 75cm)

Environmental

Water Resistance	IP65 when the lid is closed
Operating Temperature	14°F to 122°F (-10°C to 50°C)
Storage Temperature	-4°F to 140°F (-20°C to 60°C)



Catalog #	Camera Head	Self-Leveling	Rod Length	Rod Size	Minimum 90° Elbow	Maximum Pipe Well Lit
H2-2168-SL	1.68"	✓	200 ft.	1/2"	3"	12"
H2-2143-SL	1.43"	✓	200 ft.	1/2"	3"	10"
H2-2143-SL	1.23"	✓	200 ft.	0.400"	2"	6"
H2-2100	1"	X	200 ft.	3/8"	1.5"	4"



CH-1SV
1" Straight View
stainless steel
camera head



CH-123SL
1.23" Self-Leveling
stainless steel
camera head



CH-143SL
1.43" Self-Leveling
stainless steel
camera head

WI-FI REELS

Hathorn® Wi-Fi camera reels offer the convenience of streaming video inspections directly to two Apple or Android mobile devices at the same time using our free Hathorn app. Allows the user to take screen shots, record videos and make voice commentary. Save videos to your phone, email to your clients or attach to your route management software seamlessly.

All Hathorn cameras are portable and can be powered by external 18V Milwaukee® or equivalent batteries (not included) offering over 12 hours of run time on a single 3.0Ah battery. Batteries are inserted into the near indestructible Hathorn hub. No wires, no external battery cradles, just solid engineering.

All Wi-Fi reels feature a footage counter and a 512Hz sonde. Like all Hathorn products, they are genuinely made with a butt-welded steel frame construction and industry-leading HDPE premium cables.



Screen Shot Function



Wi-Fi Reel for use with Phone or Tablet



Stream & Record to Mobile Device



Works with 18V Milwaukee® or Equivalent Batteries



200 to 400 ft of ground



512Hz or 640Hz High Power Sonde



Stream & Record to Mobile Device



Self-Leveling Camera Heads



Industry-Leading Warranty

WI-FI REELS SPECIFICATIONS

Display

Size & Type	Dependent upon Apple/Android Device
Resolution & Brightness	1024 x 600 pixels with 1,000 cd/m2

Recording, Storage & Features

Recording Options	MPEG4
Screen Shot	JPEG
File Storage	Mobile Device, cloud or USB
Footage Counter	Feet or meters - resettable
Sonde Frequency	512Hz
Push Rod	HDPE - 200 ft to 400 ft / 3/8" to 5/8"
Start Up Time	~ 15 seconds

Power

Battery (not incl.)	Only Milwaukee® M18 18V or equivalent
Battery Life	~ 12Hrs. using 3.0Ah
AC/DC Adapter	12V - 4.1A (included)

Environmental

Water Resistance - Camera & Rod	IP68 to 60psi
Water Resistance - Reel Hub	IP65
Operating Temperature	14°F to 122°F (-10°C to 50°C)
Storage Temperature	-4°F to 140°F (-20°C to 60°C)
Wi-Fi Frequency	IEEE802.11b/g/n



Large

Catalog #	Camera Head	Self-Leveling	Rod Length	Rod Size	Minimum 90° Elbow	Weight	Max Pipe	Dimensions
WLR-4168-SL	1.68"	✓	400 ft.	1/2"	3"	65 lbs.	12"	33" x 29" x 16"
WLR-2168-SL	1.68"	✓	200 ft.	1/2"	3"	45 lbs.	12"	33" x 29" x 16"
WLR-4143-SL	1.43"	✓	400 ft.	1/2"	3"	65 lbs.	10"	33" x 29" x 16"
WLR-3143-SL	1.43"	✓	300 ft.	1/2"	3"	55 lbs.	10"	33" x 29" x 16"
WLR-2143-SL	1.43"	✓	200 ft.	1/2"	3"	45 lbs.	10"	33" x 29" x 16"

Mid

Catalog #	Camera Head	Self-Leveling	Rod Length	Rod Size	Minimum 90° Elbow	Weight	Max Pipe	Dimensions
WMR-2168-SL	1.68"	✓	200 ft.	1/2"	3"	42 lbs.	12"	29" x 18" x 15"
WMR-2143-SL	1.43"	✓	200 ft.	1/2"	3"	42 lbs.	10"	29" x 18" x 15"
WMR-2123-SL	1.23"	✓	200 ft.	0.400"	2"	42 lbs.	6"	29" x 18" x 15"

Mini

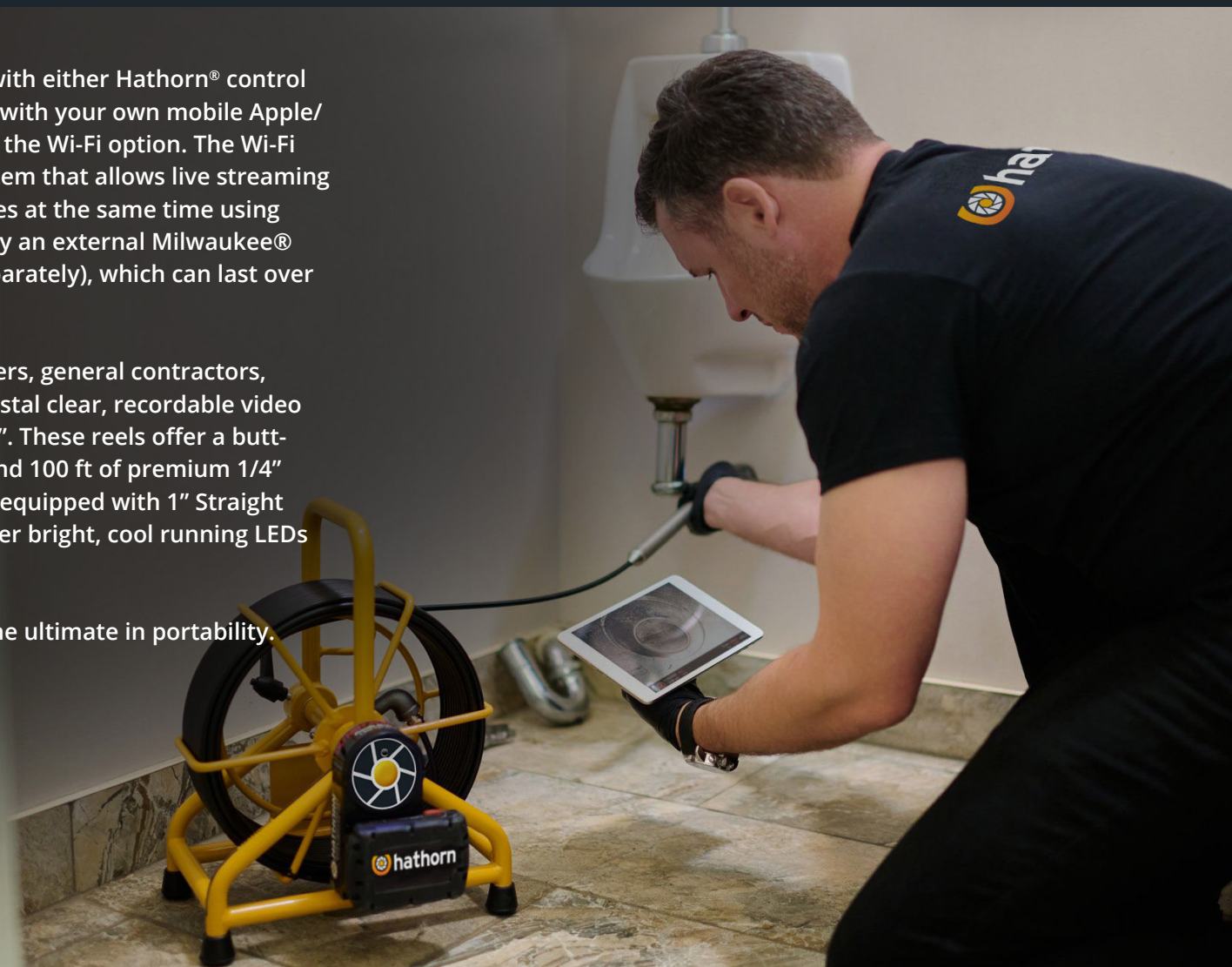
Catalog #	Camera Head	Self-Leveling	Rod Length	Rod Size	Minimum 90° Elbow	Weight	Max Pipe	Dimensions
WMN-2123-SL	1.23"	✓	200 ft.	3/8"	2"	33 lbs.	6"	24" x 18" x 10"
WMN-2100	1	X	200 ft.	3/8"	1.5"	33 lbs.	4"	24" x 18" x 10"

CAMERA REELS MICRON

Micron camera reels can be used with either Hathorn® control modules (H12+ recommended), or with your own mobile Apple/Android device, should you opt for the Wi-Fi option. The Wi-Fi option is a standalone camera system that allows live streaming and recording to up to three devices at the same time using Hathorn's free app. It is powered by an external Milwaukee® 18V or equivalent battery (sold separately), which can last over 12 hours.

Micron reels are trusted by plumbers, general contractors, and home inspectors to deliver crystal clear, recordable video inspections of small pipes 1.5" to 3". These reels offer a butt-welded steel frame construction and 100 ft of premium 1/4" push rod. Both styles of reel come equipped with 1" Straight View camera heads fitted with super bright, cool running LEDs for optimal picture quality.

These features give Micron reels the ultimate in portability. With a full one-year warranty.



Screen Shot Function



Works with 18V Milwaukee® or Equivalent Batteries*



512hz or 640hz High Power Sonde



Standard Version
To be paired with Hathorn H12+ Controller



Wi-Fi Version
To be paired with Phone or Tablet



Industry-Leading Warranty

CAMERA REELS - MICRON SPECIFICATIONS

Display

Size & Type	Dependent upon Apple/Android Device
Resolution & Brightness	1024 x 600 pixels with 1,000 cd/m2

Recording, Storage & Features

Video Recording	MPEG4
Screen Shot	JPEG
File Storage	Mobile Device, cloud or USB
Footage Counter	Feet or meters - resettable
Sonde Frequency	512Hz or 640 Hz High Power Sonde
Push Rod	HDPE - 100 ft. of 1/4"
Start Up Time	~ 15 seconds

Power

Battery (not incl.)	Only Milwaukee® M18 18V or equivalent
Battery Life	12 hrs. using 3.0Ah (sonde off)
AC/DC Adapter	12V - 4.1A (included)
Wi-Fi Frequency	IEEE802.11b/g/n

Environmental

Water Resistance - Camera & Rod	IP67 to 60psi
Water Resistance - Battery Cradle	IP66
Water Resistance - Reel Hub	IP66
Operating Temperature Storage	14°F to 122°F (-10°C to 50°C)
Temperature	-4°F to 140°F (-20°C to 60°C)

Standard Reel



Wi-Fi Reel



Catalog #	Camera Head	Wi-Fi	Self-Leveling	Rod Length	Rod Size	Max Pipe	Weight	Max Pipe	Dimensions
MC-1100	1"	✗	✗	100 ft.	1/4"	3"	15 lbs.	12"	16" x 12" x 10"
MC-1078	7/8"	✗	✗	100 ft.	1/4"	3"	15lbs.	12"	16" x 12" x 10"
WMC-1100	1"	✓	✗	100 ft.	1/4"	3"	16 lbs.	10"	16" x 12" x 10"
WMC-1078	7/8"	✓	✗	100 ft.	1/4"	3"	16 lbs.	10"	16" x 12" x 10"

LOCATOR UTILI-TRACK

Made in the USA, the Hathorn Utili-Track sonde and cable locator allows users to adapt the locator to their specific needs. The Utili-Track offers best-in-class 512Hz sonde and line trace locating indicating direction of the sonde and it's depth. Ergonomically designed and balanced, it provides depth reading of up to 25 feet and current measurement to help identify target utilities and sondes in crowded areas.

A large, high-contrast LCD screen offers a visible signal response. Automatic depth, automatic current, and proximal directional arrows are readable in the brightest sunshine or backlit for viewing in dimmer conditions.

The Utili-Track can locate multiple active frequencies with a minimum of interference while maintaining the ability to continue locating past faults and around conduit bends. Passive frequencies identify "live" and charged lines by their naturally occurring electromagnetic fields. The Utili-Track offers multiple passive frequencies -- 50Hz, 60Hz, Radio Frequency, Cathodic Protection Rectifier & CATV -- allowing line locating without the use of a transmitter.



512hz or 640hz
High Power Sonde



Light Weight
4.2 lbs/1.9 kg



Works Comes with
6 C-cell batteries



Industry-Leading
Warranty



Ultra-clear LCD
screen with depth
display

LOCATOR UTILI-TRACE

Made in the USA, the Hathorn Utili-Trace transmitter offers multi-frequency coupled induction ranging from 8 kHz to 118 kHz including the traditional 512Hz frequency, and automatic impedance matching for direct connections. This 3-watt transmitter has the ability to simultaneously apply two frequencies to a utility.

From one transmitter setting, the user can locate the main line as well as other services by "lighting up" the entire site. This set-and-forget feature saves you time and money by reducing the need to repeatedly relocate the transmitter. All functions are accessed via weather-proof membrane buttons and both user input and transmitter status are verified with audible responses



Operates on low, medium and high frequency ranges



Light Weight
2.2 lbs/1 kg



Comes with 8
C-cell batteries



Multi-frequency



Industry-Leading
Warranty

PATCH CABLES



PC-CR12

Patch cable connecting 12 pin reel to 12 pin controller
(Current models)



PC-C12R10

Patch cable connecting new 12 pin controller to older 10 pin reel



PC-C10R12

Patch cable connecting older 10 pin controller to newer 12 pin reel



PC-CR12G

Patch cable for keyhole gas camera system



PC-CR10

Patch cable connecting older 10 pin reel to older 10 pin controller

Hathorn manufactures its connection cables to ensure a reliable signal between camera reel and monitor for the life of the product

ACCESSORIES

Controller mounts, power supplies, camera head skids and brake handles - Hathorn carries all the accessories you need to upgrade and maintain your camera system.



PS-12V

12V power supply



10105-H12

Mounting bracket complete with pin & shaft for large and extra large reels



90204

Pin for reel mounting bracket



10128-H12

Shaft for controller mounting bracket



10119

Small brake handle for mini/mid reels



10120

Large brake handle for standard reel



10121

Rubber foot for reel



WHEEL6

6" X 1 1/2" wheel for H2 and H7



WHEEL7

7" wheel in black



WHEEL8

8" x 1 3/4" wheel

CAMERA HEAD SKIDS

Skids are available for all Hathorn camera heads. Skids are used to protect your camera head from damage and also to raise the head out of standing water and center the camera in the pipe. It is recommended that users always use a skid on their camera heads so as to protect their investment.



SK-168SLSV

P-trap skid for 1.68" camera heads



SK-143SL

P-trap skid for 1.43" Self-Leveling camera head



SK-168GR

3" grooved skid for 1.68" camera heads



SK-143GR

3" grooved skid for 1.43" camera heads



SK-143SV

P-trap skid for 1.43" Straight View camera head



SK-123SV

3" grooved skid for 1.43" camera heads

CAMERA HEAD SKIDS

Skids are available for all Hathorn camera heads. Skids are used to protect your camera head from damage and also to raise the head out of standing water and center the camera in the pipe. It is recommended that users always use a skid on their camera heads so as to protect their investment.



SK-123SL

P-trap skid for 1.23" mini self-leveling camera head



SK-1GR

Grooved skid for micron 1" camera head



SK-123TOW

Tow skid for 1.23" camera head



SK-RSL

Universal roller skid for 1.68" or 1.43" camera head for 6" - 14" pipes



SK-RSMN

Mini roller skid for 1.23" camera head for 4" - 6" pipes

CAMERA HEADS



CH-1SV

1" Straight View stainless steel camera head



CH-123SL

1.23" Self-Leveling stainless steel camera head



CH-143SL

1.43" Self-Leveling stainless steel camera head

CAMERA HEAD EXCHANGE PROGRAM

Hathorn created the camera head exchange program because we understand that downtime waiting for repair of your tools can be costly. Being an owner of a Hathorn camera means you are automatically enrolled in the camera head exchange program for the life of the camera. Should you ever need to replace or repair your camera head you can purchase a brand new one, directly from us or any of our dealers, for a deeply discounted price. The old head must be returned to us to qualify for the discount and the head must be in rebuildable condition.

RETERM KITS



RT-LR

Standard kit for 1/2"



RT-LG (0.400)

Standard kit for .400" mid reel



RT-LR (5/8)

Standard kit for 5/8"



RT-MN (0.400)

Standard kit for .400" mini reel



RT-MN

Standard kit for 3/8" mini reel



RT-MC (3/8)

Standard kit for 3/8" micron



RT-MC

Standard kit for 1/4" micron

ABOUT HATHORN RETERM KITS

Getting a reterm done on a Hathorn camera is easy because we're focused on giving our customers options and value on parts and services. Either visit one of our repair centers or order the parts from us directly. Unlike many camera manufacturers, we include a new sonde in every reterm kit. This ensures your sonde works when it is supposed to and doesn't require you to pay for a part that should be included every time

REPAIR CENTRES





We will **be happy to answer**
any questions you may have...

Hathorn Corporation

480 Hood Road, Unit 5
Markham, Ontario
L3R 9Z3 Canada
sales@hathorncorp.com
Phone: (866) 428-4676

Hathorn USA

739 North Wilson Road
Columbus, Ohio
43204 USA
Phone: (866) 428-4676

Minicam Headquarters

12600 Newburgh Rd
Livonia,
MI 48150 USA
info@minicaminc.com
Phone: (734) 744 5557



A **Halma** company



HATHORN | Phone (866) 428-4676 | sales@hathorncorp.com | www.hathorncorp.com