

# LED Curing Solutions

For trenchless pipe renovation

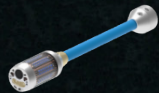




## Curing heads



XXS: 2 - 4"



XS: 3" - 6"



S: 4 - 8"



L: 4 - 12"



XL: 6 - 24"

# SpeedyLight + LED

## Fast light curing technology for laterals & mainlines

The SpeedyLight+ LED curing system is a game changer in the sewer renovation market. Its revolutionary LED technology allows contractors to optimize their operations by increasing working efficiency at the job site up to six times. It is designed to cure felt liners, invertible glass-fiber liners and fibre-glass pull-in liners.

SpeedyLight+ works in pipes from 2" all the way up to 24" with different configurations of curing heads

Compatible with felt liners, GRP UV liners and invertible glass liners. Also compatible with our Spectra Dive curing head for manhole rehabilitation.

SpeedyLight+ can also do point-repair with our family of LED packers.



# SpeedyLight VX LED

A curing system for verticals & in-house liners



The SpeedyLight VX LED curing system is designed for in-house and vertical no-dig rehabilitation applications. Its revolutionary LED technology allows CIPP contractors to optimize their curing times by avoiding downtimes associated to ambient curing resins.

Working diameters start at 2.75" and the system is capable of curing liners up to 6".

In conjunction with our XXS kit SpeedyLight VX can also work in pipes as small as 2".

The VX is coming with a XS head. The XXS kit can be added as option.

## XXS kit

With our special XXS curing head you can work in 2" and 3" simply connecting the kit to SpeedyLight+ and SpeedyLight VX.

The XXS kit is ready to reline pipes up to 50 ft long, ideal for indoors rehabilitations.

The kit comes with its own motorized pulling unit, XXS 100watts curing head, 50 ft long hose and a protective case.

Additionally, you can do sharp 90-degree bends with this kit.





# LED Rig

## LED technology for a more efficient UV glass-fibre liner curing

LED Rig family of curing devices are designed for use with glass fibre reinforced polymer GRP liners in the rehabilitation of sewer networks.

Sewertronics' patented cooling technology allows high efficiency of the LED modules, improving overall working and curing times compared with the traditional UV lamp systems. LED Rig has an extremely low power consumption, small footprint.

LED Rig works in pipes 6" all the way up to 24" only with GRP UV liners and it is compatible with our Spectra Dive for manhole rehabilitation.



# QuickPatch LED

## Sewertronics' LED shadowless solution for patch repair



The Sewertronics' QuickPatch LED cures prepregs for a spot repair from 3.15" up to 24".

QuickPatch's high-power LED design incorporates a breakthrough, shadowless technology that guarantees full radiation reach to the entire surface of the fibre-glass prepregs.

The LED radiation design, follows the radiation and cooling principles of our patented technology and allows to cure every patch in just 3-5 minutes.

We have a family of LED packers for all pipe diameter needs:

- 3" to 5"
- 5" - 8"
- 8" - 12"
- 12" - 18"

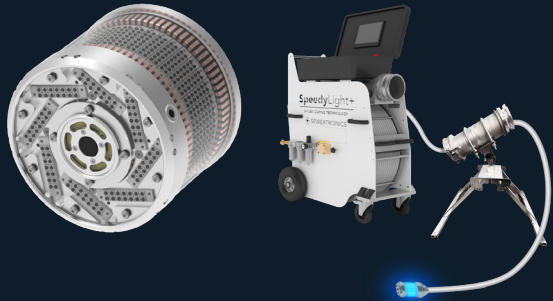




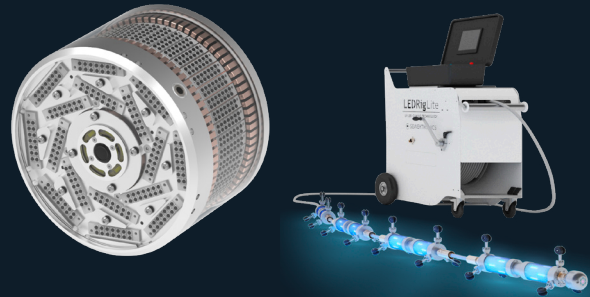
# Spectra Dive

Dive is the latest development by SEWERTRONICS R&D department in conjunction with BRANDENBURGER Liner's new manhole GRP UV liner 2.5 VERTICAL. Dive comes in two different versions (Dive-S1800 compatible with Speedylight+ and Dive-L2400 compatible with LED Rig).

Please contact your distributor or SEWERTRONICS technical department to check whether your Speedylight+ has a 1200 or 1800 watts power unit embedded, in case you have a 1200 watts unit you will need to upgrade to 1800 watts following your dealer or our technical department directions.



**Spectra Dive-S1800,  
compatible with Speedylight+**



**Spectra Dive-L2400,  
compatible with LED Rig**



We will **be happy to answer**  
any questions you may have...

**Minicam Headquarters:**  
12600 Newburgh Rd.  
Livonia, MI 48150  
info@minicaminc.com

**California Service Center:**  
703 W Anaheim St.  
Long Beach, CA 90813  
california@minicaminc.com

**Florida Service Center:**  
2332 Old Combee Rd. Suite 107  
Lakeland, FL 33805  
florida@minicaminc.com

**New England Service Center:**  
1 Industrial Way. Unit 2  
Tyngsborough, MA 01879  
newengland@minicaminc.com



A **Halma** company



SEWERTRONICS™ | Phone (734) 452-7068 | sales@minicaminc.com | www.sewertronics.com