

## Lateral Pin Kit

A useful addition to the SOLOPro+ pipeline inspection system. Used exclusively with the Pan & Rotate camera (CAM026), simply attach the pin to allow the inspection of incoming lateral pipe. The pin adjusts the direction and guides the camera smoothly along the pipe. The kit comes with three sizes of pin small 150mm (6in), medium 225mm (9in) large 300mm (12in), fixings and full instructions.



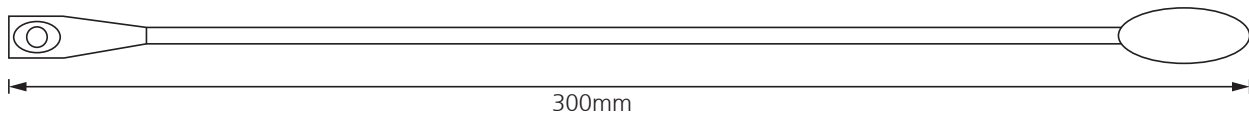
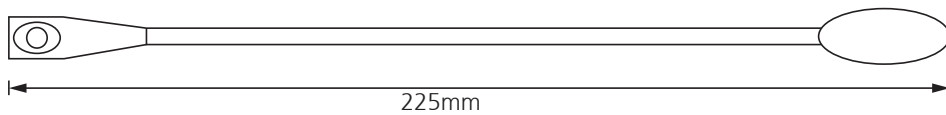
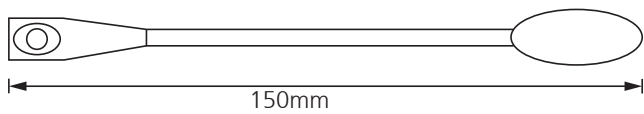
## Compatibility



## Technical Data

Small Pin Length	150mm
Medium Pin Kit	225mm
Larger Pin Kit	300mm
Fixings	6 Screws
Case	Foam lined with snap lock lid
Compatibility	Proteus / SOLOPro+

# Later Pin Kit



Three sizes of pin small 150mm (6in), medium 225mm (9in) large 300mm (12in), fixings and full instructions included.

112021 © 2022 Minicam



  
A Halma company

 **minicam**

Minicam Ltd, Unit 33, Ravenscraig Road, Little Hulton, Salford, M38 9PU  
Tel: + 44 (0) 1942 270524 • Email: [info@minicam.co.uk](mailto:info@minicam.co.uk)  
[www.minicamgroup.com](http://www.minicamgroup.com)