



WiFi Module Original Instruction Manual

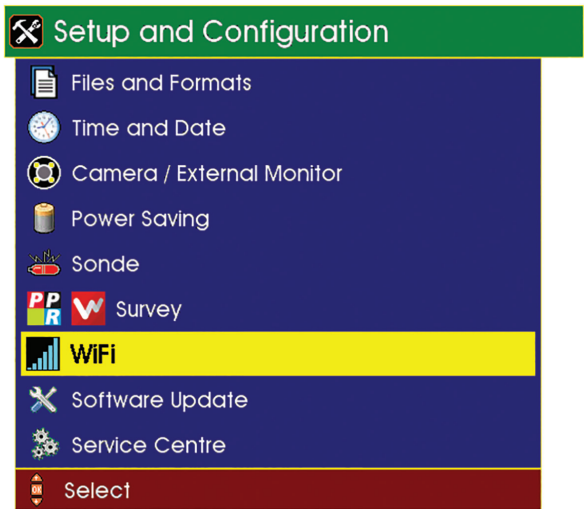
Version A

SOLOPro+

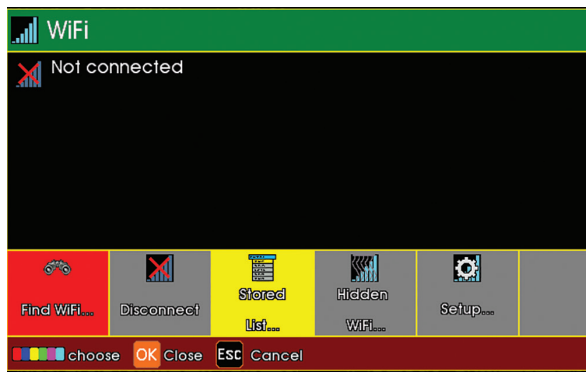
WiFi

This feature allows the user to connect the CCU to WiFi.

- 1 Select WiFi from the **Setup and Configuration** drop-down menu page 61.



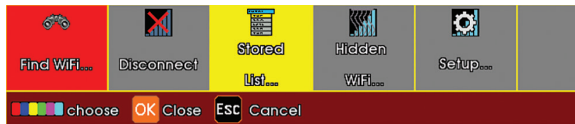
- 2 A menu will be displayed giving options to connect to WiFi.



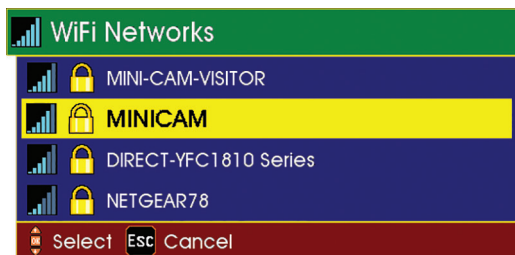
- 3 Select **Stored F3** (Yellow Key) to view stored network URLs (addresses).



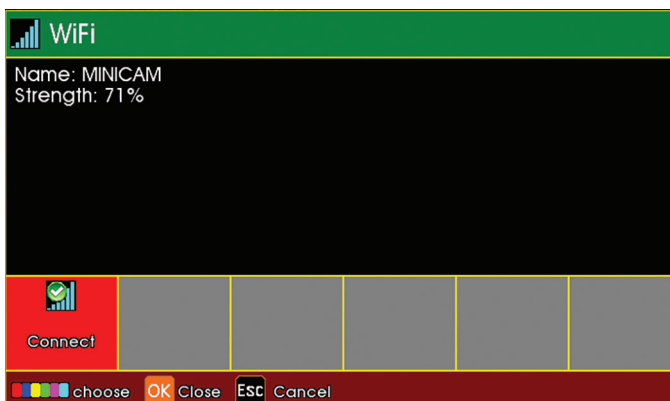
- 4 Select Find WiFi... F1 (Red Key) to search for available networks.



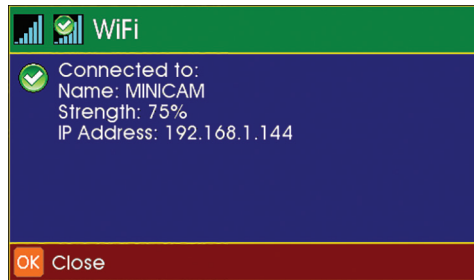
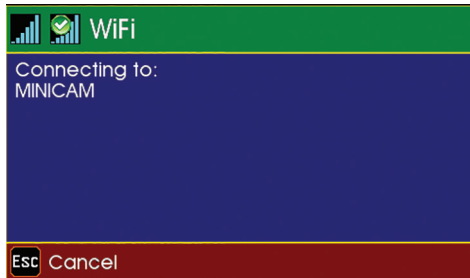
- 5 Select the required network form the menu.



- 6 Select **Connect** F1 (Red Key) to connect to the selected network (you will have to type a WiFi password in if required).



- 7 Status screens will display the connection progress, followed by connection confirmation, signal strength and IP Address.



- 8 The main display screen (see page 31) shows the WiFi status icon at the bottom right-hand side of the sidebar.

WiFi NOT CONNECTED
Red cross indicates no signal

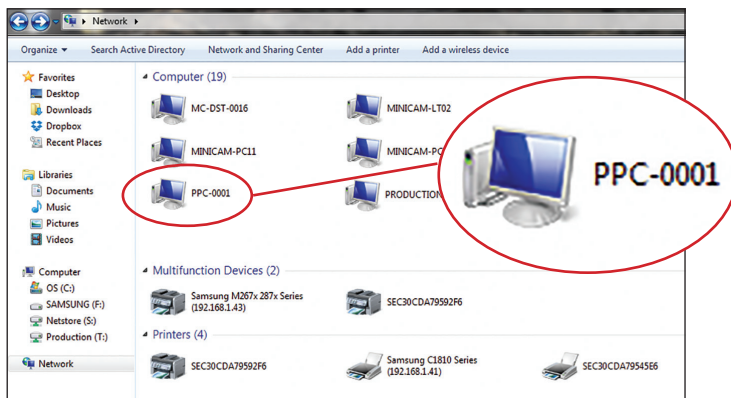


WiFi CONNECTED
Vertical blue coloured bars indicate signal strength

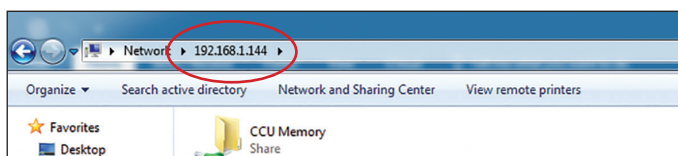


Connecting to your PC

Using *Explorer* in *Windows® OS*, the CCU may appear under the **Network Neighbourhood**. You can access your files directly.



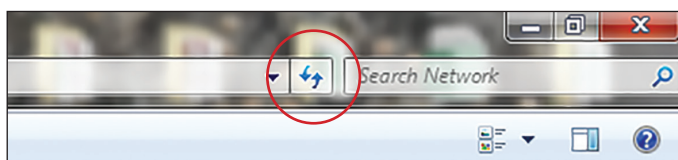
Alternatively, use the search bar in *Explorer* by typing \\ followed by the IP Address shown on your SOLOPro+ (Example - \\192.168.1.144)



This will then connect you to your SOLOPro+ control unit which will display a folder named CCU Memory. Double click on this folder to access all files currently on that control unit. You then can open any file to view video footage or still images and ProPIPE Reports or alternatively you can save them onto your PC.



NOTE: If the CCU is not displayed after the first search, try searching again by hitting the **Refresh** button on the menu bar





File Sharing



NOTE: To share the files over email or WincanWeb internet access is needed. Please connect to a Wifi with an internet connection before sharing files.

Email

- 1 Use the **Gallery Browser**  to select a file to be sent.
- 2 Navigate to the desired file, press **OK** and select the **Share**  option. **The Email option is only available for a single file, directories cannot be sent by email.**
- 3 From the menu select the **Email** option. A text box with all the necessary data inputs fields will be displayed.
- 4 Enter Address, CC Address, Subject and Body text then press **OK**. The CCU will start the sending process. A message will be displayed with the sending progress, which will display **Sent** when the email has been dispatched.





NOTE: The most recent Address, CC Address and Subject are stored over the power cycle.



NOTE: The file to be shared over the email cannot exceed 10MB

WincanWeb

If the user has a *WincanWeb* account he can use it to upload *Wincan* Embedded projects.

- 1 Use the **Gallery Browser**  to select a WinCan project to be sent.
- 2 Navigate to a WinCan project, press **OK**.
- 3 Select the **Share**  option.
- 4 From the menu select the **WincanWeb** option. A text box with all the necessary data inputs fields will be displayed.
- 5 Enter Login and Password, then press **OK**. The WinCanWeb will start the sending process. A message will be displayed with the sending progress, which will display **Sent** when the upload has finished.




NOTE: To share using WincanWeb, WinCan catalogues must be installed on the CCU.




NOTE: Login and password are stored over the power down.

Share Status

The user can clear the status window displayed after the share process has been started and an appropriate form filled, without interrupting file sharing.

The share icon  will be visible in the right bottom corner until the Email or WincanWeb has finished sending. The progress can be also seen in the **Share Status**

which can be accessed after pressing **Gallery Browser** . It will also inform the user in the case of a sending failure, which may happen if the internet connection has been interrupted or services are temporarily unavailable.



NOTE: To successfully share files, the CCU needs to remain on and connected to the internet until the sharing has finished.



Mini-Cam
Unit 4, Yew Tree Way
Stonecross Park
Golborne
Warrington
WA3 3JD
United Kingdom

Tel: +44 (0) 1942 270524
Email: info@minicam.co.uk
www.minicam.co.uk

